



# Investor Conference

## 2023Q3



# Disclaimer

---

This document and relevant information may contain certain forward-looking statements that are inherently subject to risks and uncertainties, including but not limited to market risks, supply chain risks, market demand, product competition, other risks and etc. Actual results may differ materially from those contained in the forward-looking statements.

Any business outlook or forward-looking statement hereof reflects the Company's estimates and expectations as of now. We undertake no obligation to update any forward-looking statement.



# Revenue & Gross Margin

(NTD: mn)

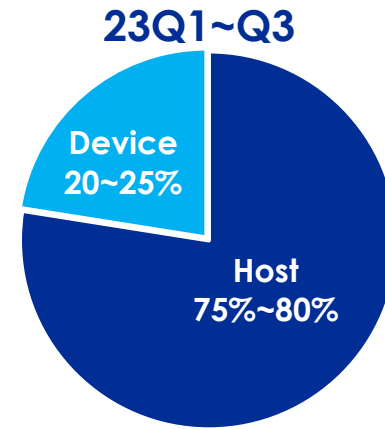




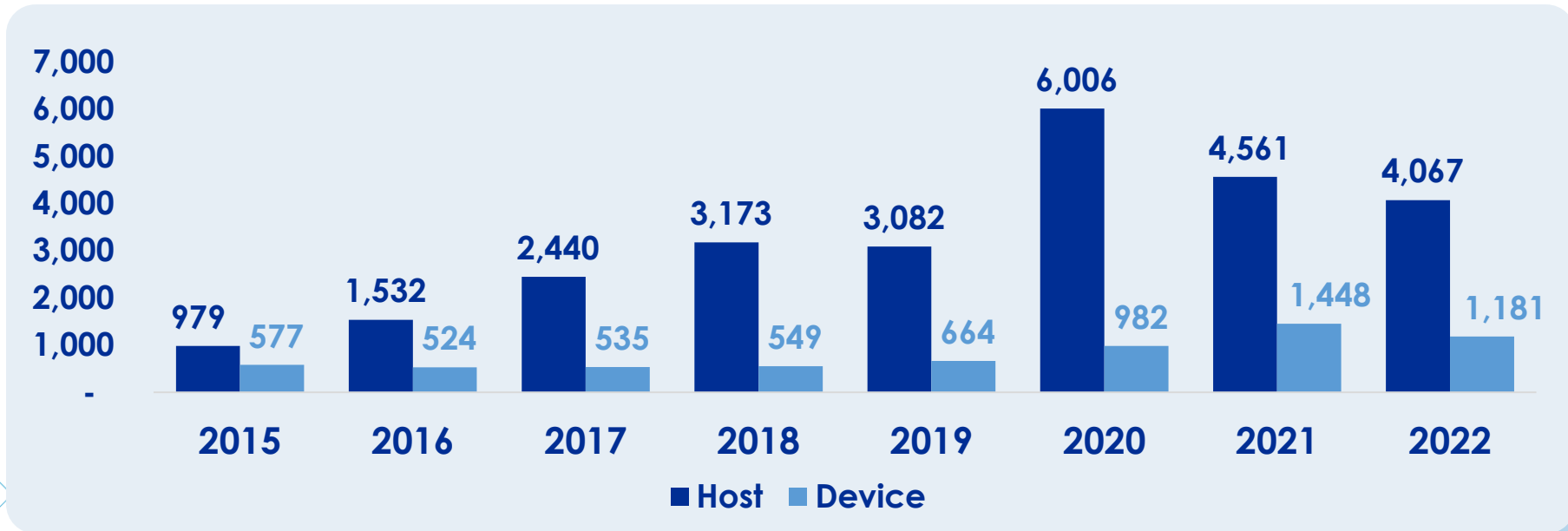
# Revenue by Product

(NTD: mn)

%	2018	2019	2020	2021	2022
Host <sup>1)</sup>	85%	82%	86%	76%	78%
Device <sup>2)</sup>	15%	18%	14%	24%	22%



Note: (1) Host: High speed interface controller  
 (2) Device: High speed device controller and others

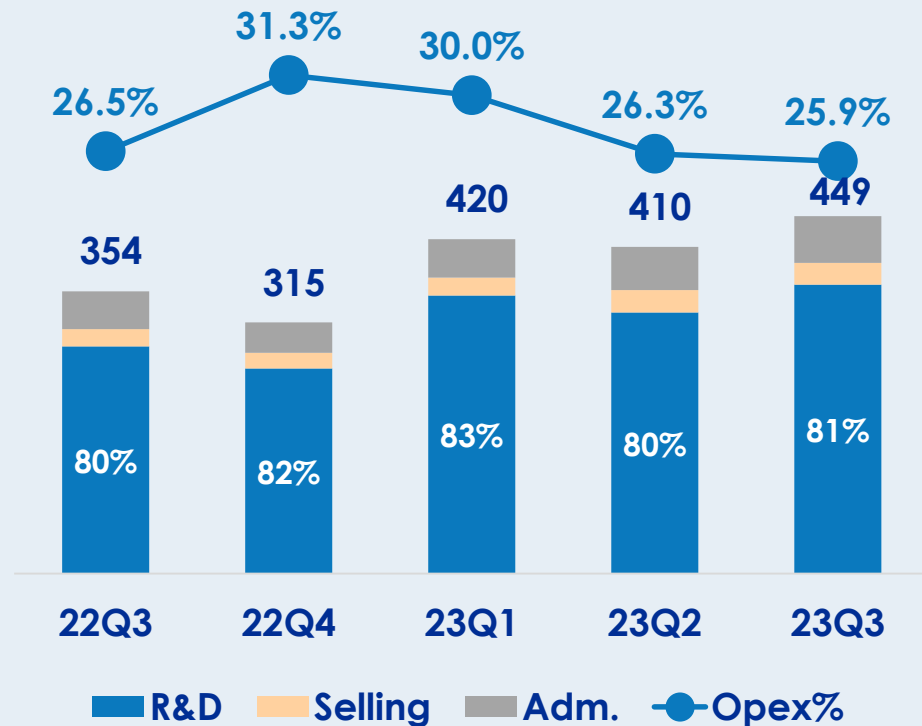




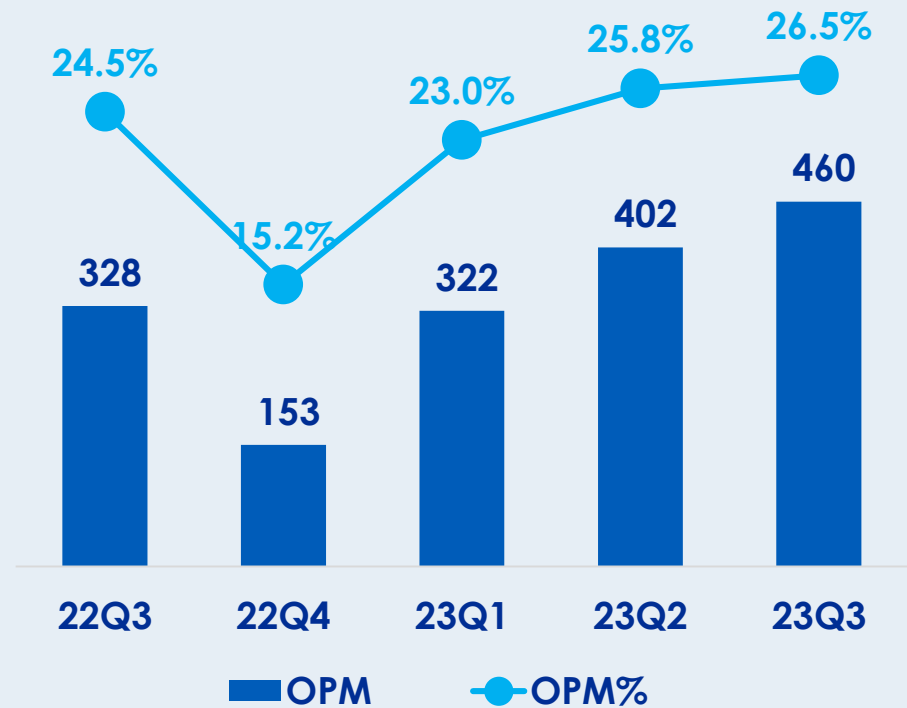
# Operating Expense & Operating Margin

(NTD: mn)

## Operating Expense

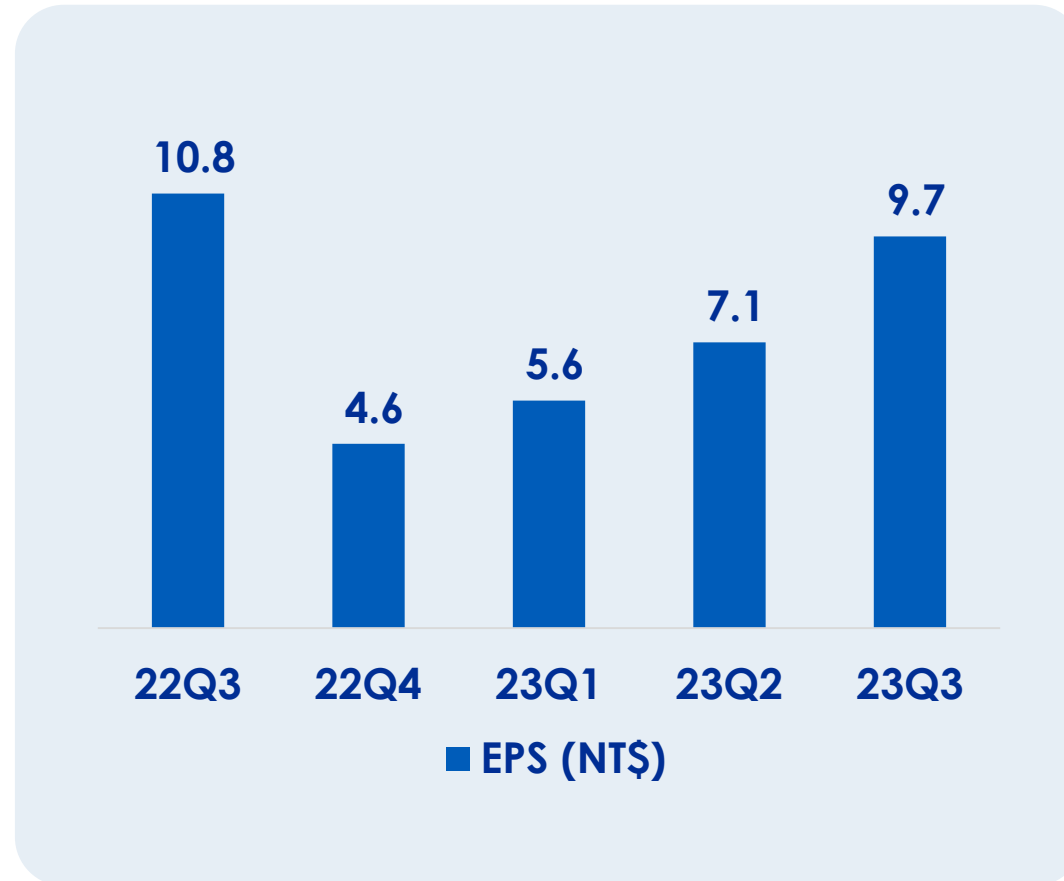


## Operating Margin



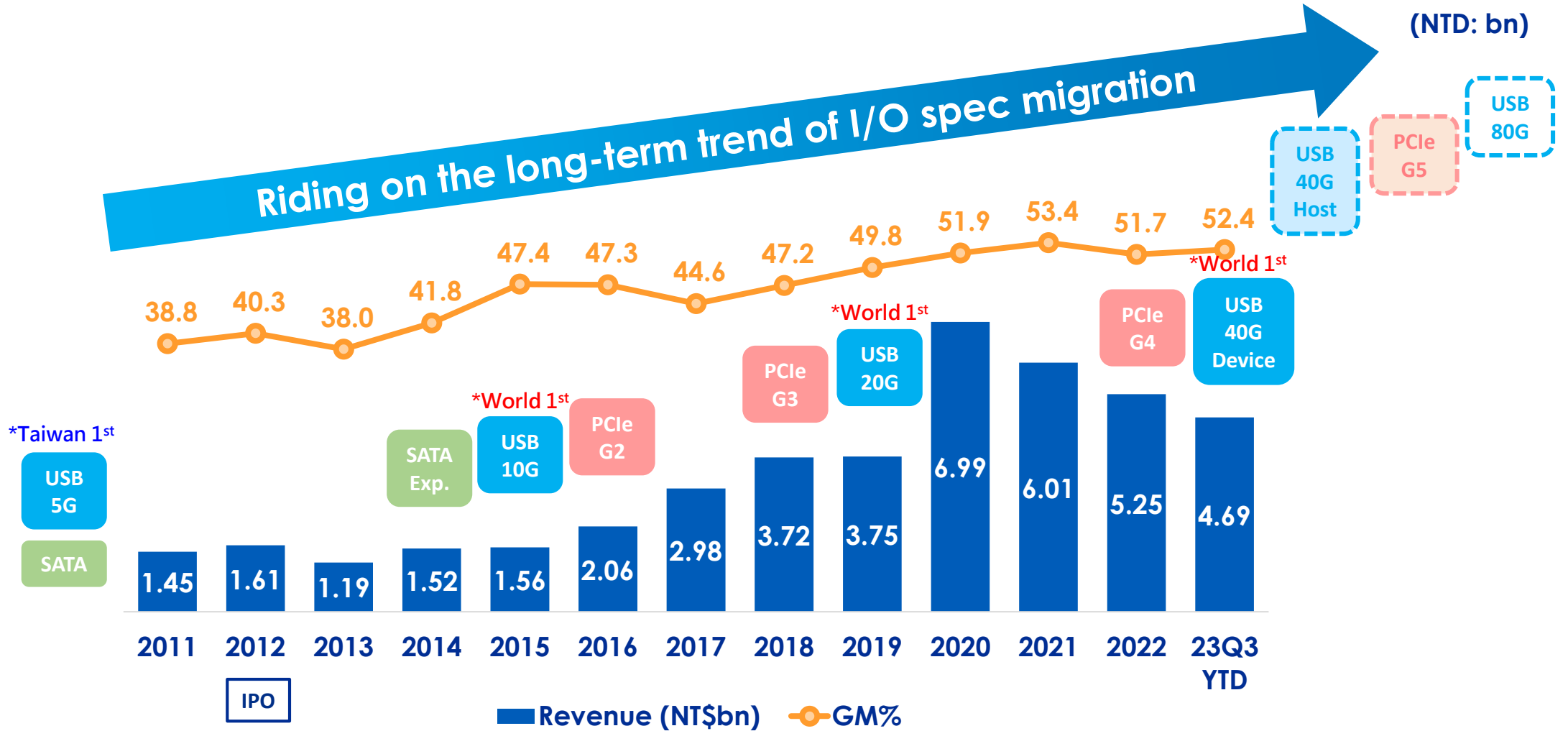


# EPS





# Driven by Continuous Technology Migration



\* Acquired certification from USB-IF



# Income Statement

	(NTD: \$)							
	<u>3Q23</u>		<u>2Q23</u>		<u>3Q22</u>		<u>QoQ</u>	<u>YoY</u>
Net Revenue	1,733,972	100%	1,557,585	100%	1,337,397	100%	11%	30%
Gross Margin	<u>908,614</u>	53%	<u>812,195</u>	52%	<u>682,654</u>	51%	12%	33%
Operating expenses	(448,769)	-26%	(410,163)	-26%	(354,329)	-27%	9%	27%
Operating Margin	<u>459,845</u>	27%	<u>402,032</u>	26%	<u>328,325</u>	24%	14%	40%
Non-operating income and expenses	302,294	17%	185,791	12%	490,049	37%	63%	-38%
Profit before income tax	<u>762,139</u>	44%	<u>587,823</u>	38%	<u>818,374</u>	62%	30%	-7%
Income tax expense	(88,258)	-5%	(97,802)	-6%	(74,078)	-6%		
Net income	<u><u>673,881</u></u>	39%	<u><u>490,021</u></u>	31%	<u><u>744,296</u></u>	56%	38%	-9%
Earnings per share(NT\$, Basic)	<u>\$ 9.74</u>		<u>\$ 7.08</u>		<u>\$ 10.76</u>			





# Balance Sheet Summary

(NTD: \$)

	2020/12/31		2021/12/31		2022/12/31		2023/9/30	
	Amount	%	Amount	%	Amount	%	Amount	%
Cash and Cash Equivalents	2,824,720	18%	2,344,369	13%	2,973,196	17%	2,925,535	16%
Account Receivable	416,206	3%	534,932	3%	835,343	5%	1,138,816	6%
Inventory	1,048,304	7%	1,413,571	8%	1,157,943	7%	680,317	4%
Total Assets	15,690,529	100%	17,934,809	100%	17,794,665	100%	18,418,642	100%
Liability	1,588,952	10%	1,652,191	9%	2,483,263	14%	1,430,401	8%
Shareholders' Equity	14,101,577	90%	16,282,618	91%	15,311,402	86%	16,988,241	92%



**asmedia**

ASMEDIA TECHNOLOGY INC

**Thank You!**